



en

NEW PRODUCTS

Tools for professionals
THE ORIGINAL
Made in Germany

New products

In this brochure, we would like to present a variety of unique products that will revolutionise your workshop. Whether you are a professional user in industry and trade or a DIY enthusiast, our new products not only offer improved functionality but also increased efficiency and user-friendliness. Let yourself be inspired by the creative solutions that have been specially developed to make your projects easier and optimise your work results.

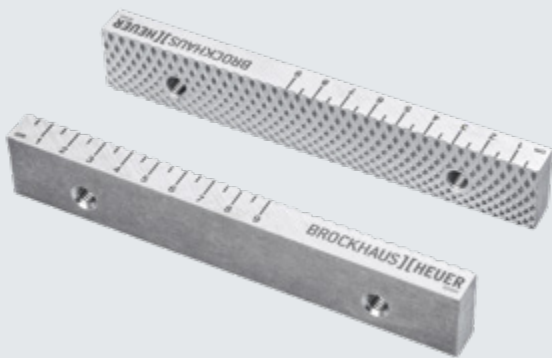
Discover the widest variety of vice accessories on the market!

Your team from
Brockhaus Heuer GmbH

HEUER replaceable jaws (screw-on)	3
Type SR – Galvanised steel, with corrugation	
Type AR – Aluminium, with corrugation	
Type SP – Galvanised steel, with prisms	
Type AP – Aluminium, with prisms	
HEUER workpiece tray	4
HEUER spindle key lock	5
HEUER spindle key	6
HEUER hexagon spanner head	7
HEUER pipe clamp	8
HEUER ball clamp	9
HEUER welding table adapter	10
HEUER short stroke module	11

HEUER replaceable jaws (screw-on)

The proven screw-on replacement jaws made of galvanised steel with a smooth and serrated side are now also available in aluminium (type AR). In addition, screw-on prism jaws with three different sized vertical prisms and a horizontal prism are now also available in two material grades, steel (type SP) and aluminium (type AP). All jaws have a scale on the head side. This simplifies measuring and cutting workpieces to length while clamped. The jaws fit all HEUER vices with replaceable jaws (Item No. 101120, 101140 and 101160).



Type SR / AR



Type SP / AP

Clamping of all workpiece types

Type SR – Galvanised steel, with corrugation

The replaceable jaws made of galvanised hardened steel, with a smooth and a serrated side, are characterised by increased wear protection and corrosion resistance. The serrated side provides a firm hold on the workpiece. The smooth side protects it from damage. This makes them a basic requirement for your workshop.

Type AR – Aluminium, with corrugation

The replaceable aluminium jaws protect your workpiece from damage due to the soft material properties. They offer better conductivity during welding, are corrosion-resistant and ideal for working with stainless steel. This makes them a valuable addition to your work environment.

Clamping of workpieces with various 'round' shapes

Type SP – Galvanised steel, with prism

The hardened jaws are made of steel and galvanised, making them resistant to wear and corrosion. A horizontal prism and three vertical prisms in different sizes allow you to clamp round and oval workpieces and expand the clamping range of round material in the vice.

Type AP – Aluminium, with prism

Similar to the steel prism jaws, these jaws have a horizontal prism and three vertical prisms in different sizes. However, they are made of aluminium. Thanks to the material properties, the workpiece is better protected against damage.

Replaceable jaws with serration

Width of jaw in mm	Type	Material	Hole spacing/mm	Height/mm	Thickness/mm	Weight per pair/kg	Item No.
120	SR	Steel	80	18	10	0,3	116 120
140	SR	Steel	85	22	12	0,6	116 140
160	SR	Steel	105	25	12	0,7	116 160
120	AR	Aluminium	80	18	10	0,1	116 124
140	AR	Aluminium	85	22	12	0,2	116 144
160	AR	Aluminium	105	25	12	0,3	116 164

Delivered in pairs.

Replaceable jaws with prisms

Width of jaw in mm	Type	Material	Hole spacing/mm	Height/mm	Thickness/mm	Weight per pair/kg	From diameter/Ø mm	Item No.
120	SP	Steel	80	30	18	0,7	5	116 122
140	SP	Steel	85	33	20	1,0	6	116 142
160	SP	Steel	105	38	24	1,7	6	116 162
120	AP	Aluminium	80	30	25	0,4	5	116 121
140	AP	Aluminium	85	33	25	0,5	6	116 141
160	AP	Aluminium	105	38	29	0,8	6	116 161

Delivered in pairs.



HEUER workpiece tray

A helping hand for clamping workpieces

Discover the versatility of the HEUER workpiece support! The ideal solution for clamping heavy workpieces with just one hand.

Combinable with all accessories as an add-on, the removable support arms made of galvanised steel offer real ad-

ded value as a 'helping hand' for heavy workpieces.

The rotatable support arm heads can be adjusted to different clamping heights. When not in use, the support arms can be retracted completely – the anvil and work area always remain freely accessible.

The powder-coated base body is also made of forged steel, just like all HEUER products.



The bevelled support arm plates make it child's play to clamp any workpiece in the vice.

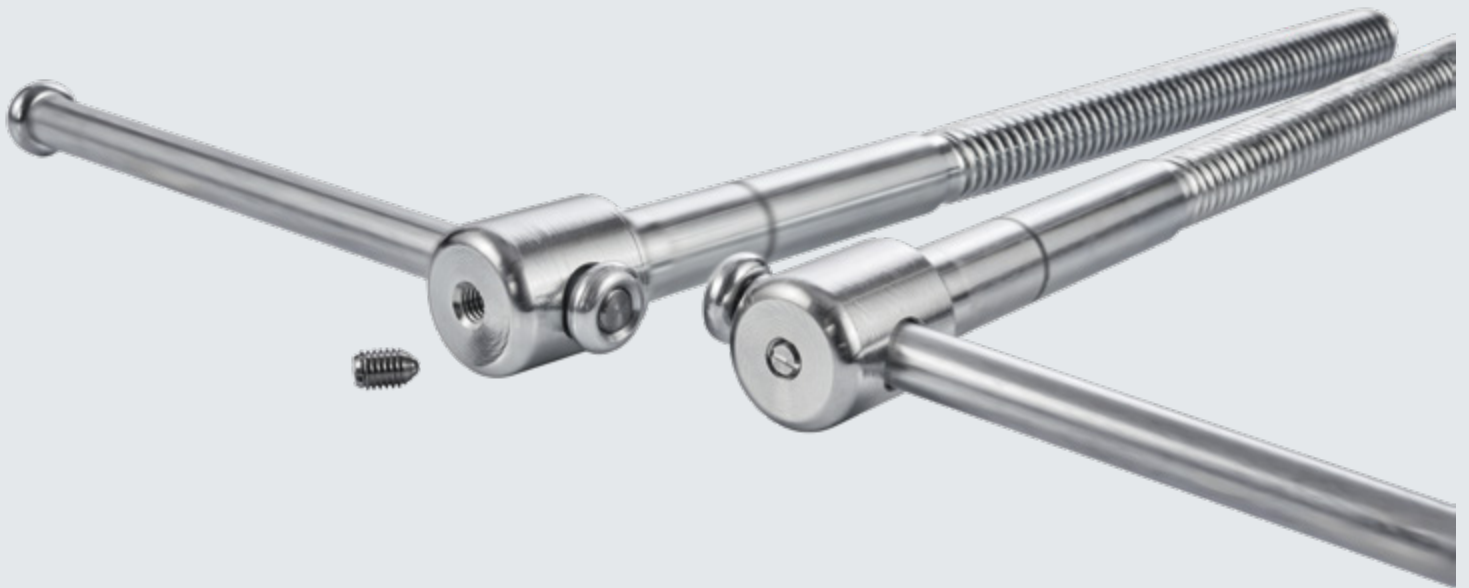


The workpiece holders are available to fit HEUER 120, 140 and 160/180 vices. They are mounted on the vice lugs.

Width of jaw/mm
Material
Fixing screw hole spacing/mm
Screw hole diameter/mm
Length of support arms/mm
Weight per pair/kg
Item No.

120	Steel	98	Ø 11	100	1,0	194 120
140	Steel	120	Ø 13	100	1,5	194 140
160*	Steel	140	Ø 13	100	2,0	194 160

* Also applies to 180 mm jaw width.



HEUER spindle key lock

More safety and working space

The HEUER spindle key lock for optimised safety and efficiency when working with vices.

The HEUER spindle key lock is a grub screw with a spring ball tip. It allows the spindle key to be locked in any position. This creates more working space at

the workbench, for example, by keeping drawers free or creating a certain machining angle after clamping.

The lockable spindle key helps to reduce noise in the workshop and protects your fingers from injury.

The spindle key lock can be retrofitted to all HEUER vices from model year 2025 onwards.



The spindle key can be quickly and easily locked using the grub screw.

No risk of injury thanks to the flush fit with the spindle head.

Width of jaw/mm	Material	Thread	Item No.
120 / 140 / 160 / 180	Stainless steel	M8	197 100



HEUER spindle key

With screwed-on snap ring

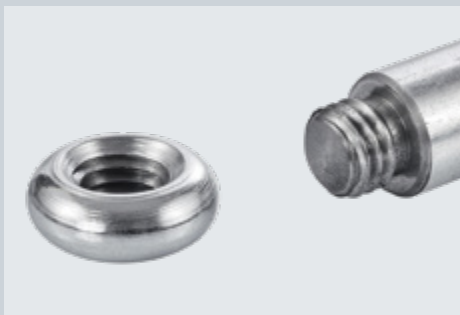
The HEUER spindle key made of galvanised steel with a screw-on safety ring offers you even more flexibility when working at the vice.

The HEUER spindle key made of galvanised steel with a screw-on safety ring offers you even more flexibility when

working at the vice.

Thanks to the screw-on safety ring, the spindle key can be quickly and easily removed from the vice. This increases your working space and reduces the risk of injury when working.

If damaged, the spindle key can also be easily replaced. This means that you can quickly and easily repair your HEUER vice yourself, even if the spindle key is damaged or bent, and continue using it.



The safety ring can be easily released and screwed back on thanks to the thread on the spindle key and in the safety ring.

Width of jaw/mm	Material *	Bar diameter/mm	Bar length/mm	Weight per piece/kg	Item No.
100	Steel	Ø 10	190	0,13	192 101
120	Steel	Ø 13	220	0,24	192 121
140	Steel	Ø 16	277	0,46	192 141
160	Steel	Ø 19	327	0,74	192 161
180	Steel	Ø 19	377	0,85	192 181

* Made of galvanised steel



HEUER hexagon spanner head

The perfect companion for the HEUER vice

With the HEUER hexagonal attachment, clamping can be achieved using a torque spanner or other tools.

If you want to clamp your workpieces with a specific, constant clamping force using a torque spanner, for example, the HEUER hexagonal attach-

ment is the perfect add-on for you. The closed HEUER hexagonal attachment is made of hardened, galvanised steel and is placed directly on the spindle head after removing the spindle key. After inserting the spindle key, it is firmly and securely connected to the vice spindle.

Note: The delivery includes a spindle key with screw-on safety rings.

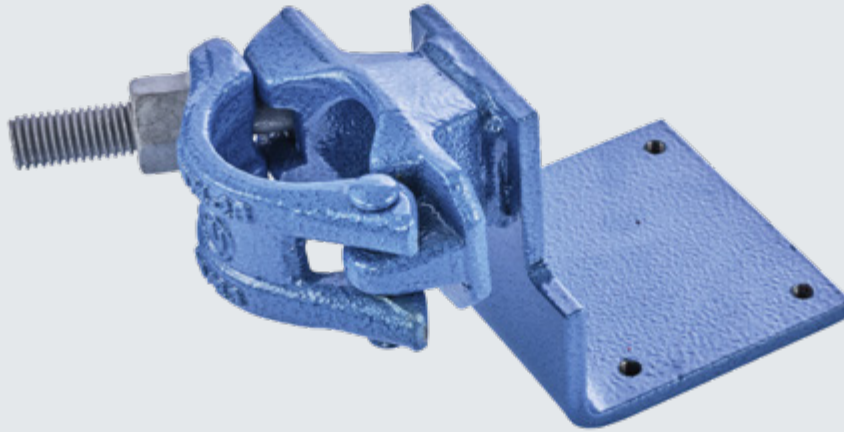


Securely connected to the vice thanks to the closed design. Version with 19 mm or 21 mm hexagon mount, e.g. for a torque spanner.

Width of jaw/mm
Material *
Hexagon/mm
For spindle head diameter/mm
For spindle key diameter/mm
Max. torque/Nm
Max. clamping force of vice/kN
Weight per piece/kg
Item No.

120	Steel	SW 19	Ø 31,5	Ø 13	150	30	0,35	193 120
140	Steel	SW 21	Ø 37,5	Ø 16	200	35	0,35	193 140
160 / 180	Steel	SW 21	Ø 42	Ø 19	200	40	0,4	193 160

* Hardened steel + galvanised



HEUER pipe clamp

Mounting on scaffolding

The HEUER pipe clamp is the ideal companion for flexible working on construction sites or other places outside the workshop.

Designed to screw on to scaffolding, other pipes or other objects, it offers a wide range of possible uses.

The mounting plate allows the HEUER Compact or the HEUER 100 vice to be attached to the pipe clamp.

Thanks to the locking screw, the clamp can be closed quickly and securely and can be easily adjusted in height. This also gives you the advantages of the

HEUER Lift, making the HEUER pipe clamp ideal for roofers and farmers working outside of workshops as well.



An excellent team: The HEUER pipe clamp combined with the HEUER Compact or the Heuer 100 vice.



Easy and fast opening and closing with a hex nut.

Width of jaw/mm	Material *	Hole dimensions of mounting plate/mm	Min. pipe diameter/mm	Max. pipe diameter/mm	Weight per piece/kg	Item No.
100	Steel	73 x 56	40	50	1,5	119 115

* Powder-coated steel



HEUER ball clamp

For a free ball head

The HEUER ball clamp offers a swivelling range of up to 45° in all directions and can be easily attached without drilling.

The safety clamp lever locks the clamp securely in any position. It can be mounted and dismantled in just a few

simple steps, and the strong clamp spindle and the proven HEUER key guarantee simple and safe operation. A versatile addition to the workbench for special machining angles with the HEUER 100 vice or the HEUER Compact.



The HEUER ball clamp is ideal for flexibly securing the vice to worktops thanks to the proven, integrated HEUER table clamp. It can be used to quickly attach the vice to worktops without causing any damage.



Width of jaw/mm	Material *	Hole dimensions of mounting plate/mm	For table thickness/mm	Swivelling range	Rotation range	Weight per piece/kg	Item No.
100	Steel	73 x 56	10–55	45°	360°	2,8	119 110

* Powder-coated steel



Adapter plate



Adapterset

HEUER welding table adapter

For rotatable clamping on the welding table

With the innovative HEUER welding table adapter, the tried-and-tested HEUER vice can be used on standard welding tables.

The design of the table radius enables quick turning and fastening using the familiar clamping system on the welding table. A HEUER vice with better conductivity for welding and replacea-

ble jaws is also available. This makes it the perfect work welding partner.

Adapter plate

Width of jaw/mm	Material*	Outer diameter/mm	Thickness/mm	Hole dimensions for vice 1/mm	Hole dimensions for vice 2/mm	Weight per piece/kg	Item No.
100 + 140	Steel	340	10	73 x 56	120 x 96	5,7	197 200
120 + 160	Steel	340	10	98 x 76	140 x 120	5,7	197 201

* Galvanised steel

Vice with replaceable jaws

Support surfaces specially machined with bright surfaces for better conductivity

Width of jaw/mm	Span width/mm	Span depth/mm	Min.+max. pipe-gripping jaw span-Ø/mm	Approx. Weight/kg	Item No.
120	150	65	16 – 55	9,0	101 123
140	200	80	27 – 70	16,0	101 143
160	225	100	27 – 100	27,0	101 163

Adapter set, depending on welding table model (4 discs)

Manufacturer	System	Thickness	Adapter set no.	Info	Material*	Art.-Nr.
GPPH	16 pro	15	3		Steel	197 203
GPPH	16 plus	12	3	Bolt 16_N_002_UNI	Steel	197 203
Lastafelshop	16	15	3		Steel	197 203
Lastafelshop	16	10	3	Bolt for 15 mm	Steel	197 203
Demmeler	16	12	4		Steel	197 204
Sigmund	16	12	4		Steel	197 204
Lastafelshop	20	15	5		Steel	197 205
Lastafelshop	20	10	5	Bolt for 15 mm	Steel	197 205
Lastafelshop	28	10		No bolt required!		
Demmeler	22	18	6		Steel	197 206
Sigmund	22	18	6		Steel	197 206
GPPH	28 pro	15	7		Steel	197 207
GPPH	28 plus	12	7	Bolt 28_N_002_UNI	Steel	197 207
Lastafelshop	28	15	7		Steel	197 207
Weldkar	28	15	7		Steel	197 207
Demmeler	28	25	8		Steel	197 208
Die Schmiede	28	25	8		Steel	197 208
Sigmund	28	25	8		Steel	197 208

* Steel, burnished



HEUER short stroke module

Quick clamping with a kick

The second generation HEUER short stroke module is ideal for serial machining of identical workpieces and as a 'helping hand' for heavy, bulky workpieces.

The second generation HEUER short stroke module is ideal for serial machining of identical workpieces and as a 'helping hand' for heavy, bulky workpieces.

It increases productivity by operating

small clamping distances of up to 5 mm by foot pedal and motor – without using the spindle key. The jaws are first moved manually close to the workpiece. The workpiece is held securely in place with the 'CLAMP' pedal. For safety reasons, the travel is limited to 5 mm.

It can build up a pressure of over 3 tonnes, is infinitely adjustable to different pressure ranges and is limited to a maximum of

200 bar. The vice can still be operated manually. The spindle key can be removed.

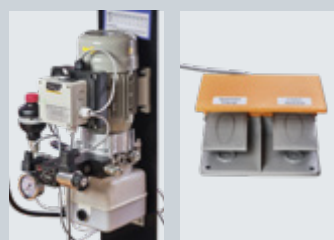
The short stroke module saves time and replaces the 'third hand' when clamping a workpiece. This makes series production more effective and easier.

By installing individual jaws, the vice can also be used as a 'pressing device' in series production.

The spindle can still be operated by hand. Thanks to the safety rings on the spindle key, it can be removed if it gets in the way when working on the vice with the short stroke module.



When the 'release' pedal is pressed, the hydraulic pressure is released and the compression spring pushes the jaws apart, releasing the workpiece.



	Width of jaw/mm	Stroke/clamping travel/mm	Max. pressure force/tonne	Max. operating pressure/bar	Max. clamping force of vice/kN	Weight per piece/kg incl. vice	Item No.
140	5	3	200	35	52	197 191	
160	5	3	200	40	66	197 193	

Note: Delivered fully assembled incl. vice with replaceable jaws.



New products

BROCKHAUS **HEUER**
GmbH

Oestertalstraße 54
58840 Plettenberg (Germany)
Phone: +49 (0) 23 91 / 60 29-0
Fax: +49 (0) 23 91 / 60 29-29
info@heuer.de
www.heuer.de

Illustrations are not colour matched. Colour variations are possible. Technical details are subject to change without notice.